



NIGERIAN METEOROLOGICAL AGENCY

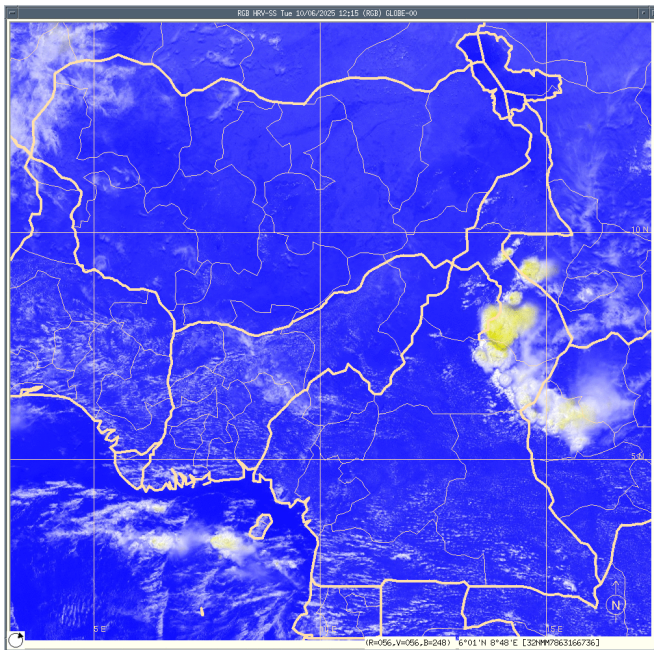
Central Forecast Office (CFO)

WEATHER ALERT ISSUED ON 12:38UTC 10/06/2025

VALID 1300UT 10/06/2025 TILL 0000UTC 11/06/2025

SYNOPSIS:

From severe thunderstorm (TS) Satellite Channel for 12:15UTC, a cluster of intense thunderstorm clouds were observed over Northeast Cameroun intensifying and propagating westward with an estimated ground speed of 50km/hr.



FORECAST OUTLOOK:

The steering winds at 700hPa level indicate areas down stream of the storm path that are expected to experience severe thunderstorms with squally winds accompanied by moderate to heavy rain:

1. Southern Taraba, North Cross River, Central/South Benue within the next 6hrs.
2. Southeast Kogi, Enugu, Ebonyi, Anambra and northern Delta within the next 8-12hrs

Advisory:

- i. Strong winds may precede the rains in areas where thunderstorms are likely to occur, public should take adequate precaution.
- ii. Ensure that loose objects are fastened to avoid collision
- iii. Driving under heavy rain should be avoided.
- iv. Disconnect electrical appliances from electrical sockets.
- v. Stay away from tall trees to avoid impact from falling branches and broken trees.
- vi. Airline operators are advised to get airport-specific weather reports (flight documentation) from NiMet for effective planning in their operations.
- vii. Residents are advised to stay informed through weather updates from NiMet. Visit our website www.nimet.gov.ng