



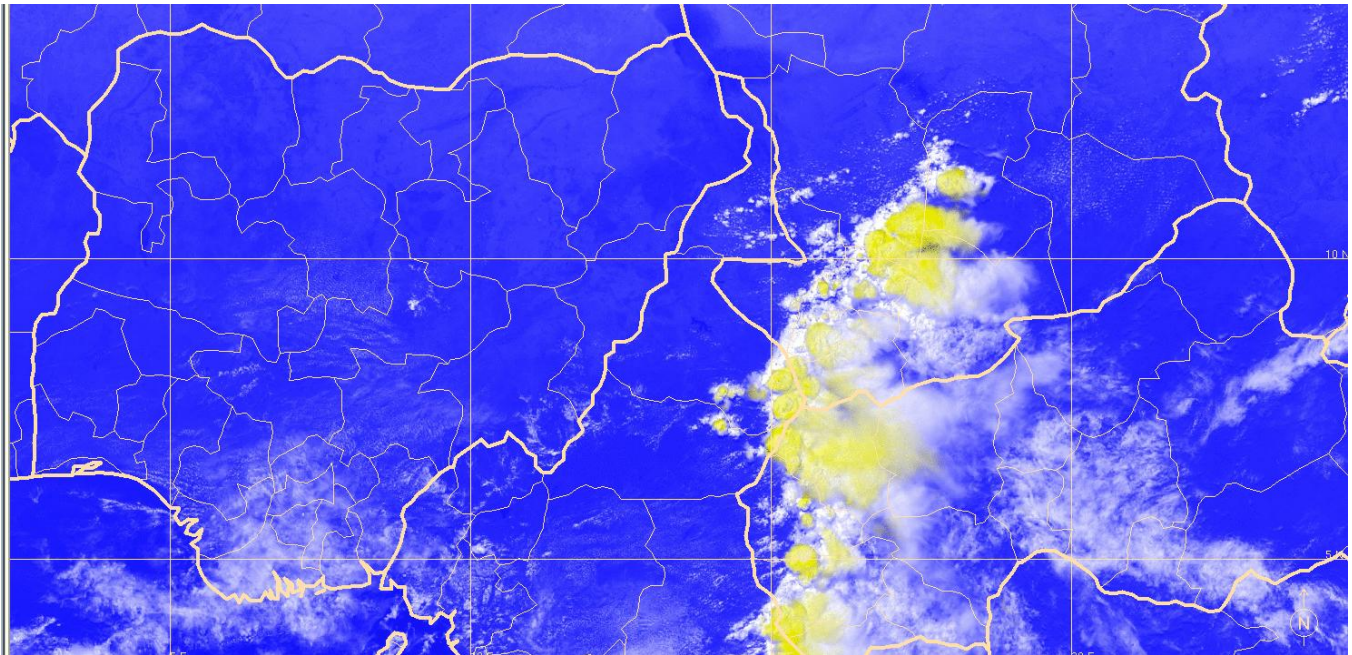
**NIGERIAN METEOROLOGICAL AGENCY**

**Central Forecast Office (CFO)**

**WEATHER ALERT ISSUED ON 14:20 LT 19TH May, 2025**

**VALID 15:30LT 19.05.2025 TILL 23:59LT 19.05.2025**

**SYNOPSIS:** Intense Thunderstorm cells observed currently over Southern Chad, Central African Republic and East-Central Cameroun moving westward with an estimated ground speed of 40-60km/hr. Severe Storm Imagery SAT channel (see below) indicative of squally winds (sustained winds of at least 22kts or 45Kmph with wind gusts of at least 40kts or 80kmph) accompanied with heavy rains.



**FORECAST OUTLOOK:**

The storm is expected to affect the eastern border states: South/Central Borno, Adamawa and Taraba in 3-6hrs time.

Central states of Gombe, Bauchi, Nasarawa, Eastern Benue, Northern Cross River in the late evening hours (18:00 to 23:00hr).

While the western central states of Abuja, East Niger, Kogi, Southern & Central Kaduna and Plateau in the early hours of Tuesday 20th May, 2025.

**Advisory:**

- i. Strong winds may precede the rains in areas where thunderstorms are likely to occur, public should take adequate precaution.
- ii. Ensure that loose objects are fastened to avoid collision
- iii. Driving under heavy rain should be avoided.
- iv. Disconnect electrical appliances from electrical sockets.
- v. Stay away from tall trees to avoid impact from falling branches and broken trees.
- vi. Airline operators are advised to get airport-specific weather reports (flight documentation) from NiMet for effective planning in their operations.
- vii. Residents are advised to stay informed through weather updates from NiMet. Visit our website [www.nimet.gov.ng](http://www.nimet.gov.ng)