

## WEATHER ALERT FOR THICK DUST-HAZE

(Weather Alert issued 19th DECEMBER, 2024)

**Forecast:** From Satellite observations, a large dust plume is observed over southern Chad and moving towards the country. The wind-flow at 925hPa is expected to transport the dust plume into the country to affect parts of Borno, Yobe, Jigawa, Kano, Sokoto, Katsina, Zamfara, Bauchi, Gombe and Northern Adamawa within the next 7 - 12hours. Dry winds accompanied with dust particles are expected to affect the areas highlighted reducing horizontal visibility to around 1000m and below.

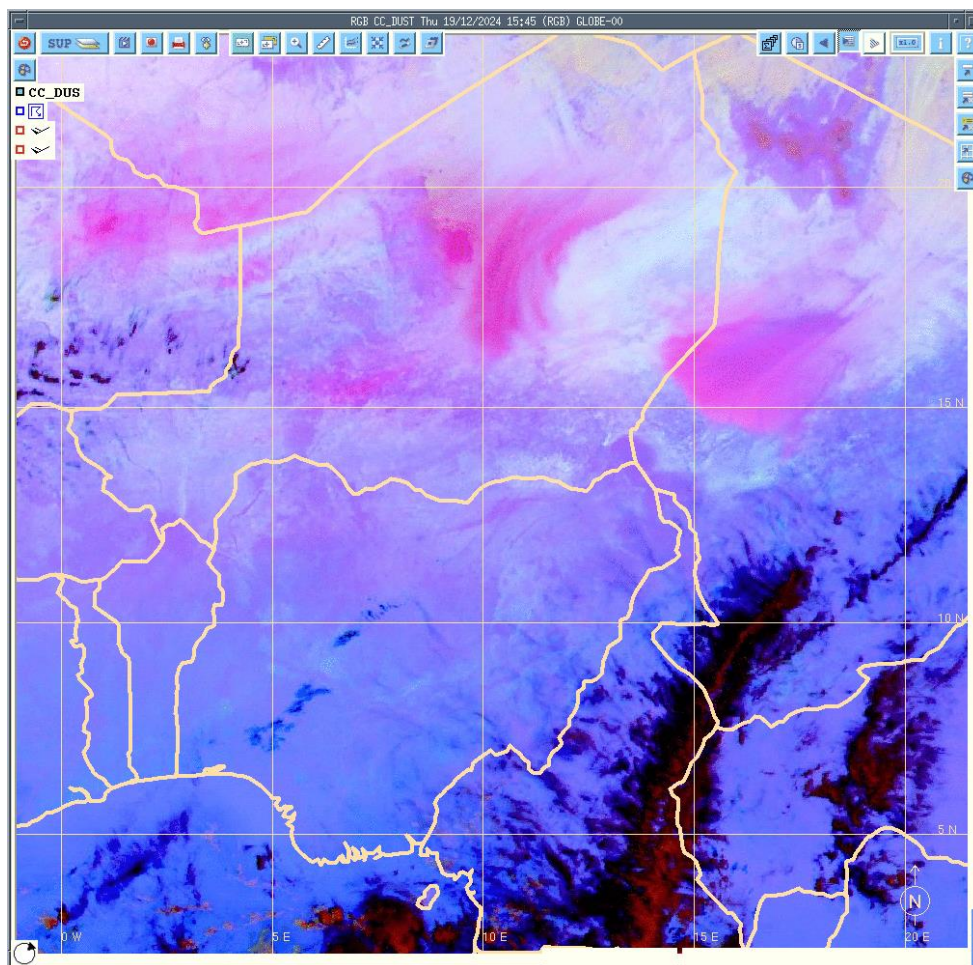


Fig.1 Satellite Imagery 1545Z 19/12/2024

### **ADVISORIES:**

(i) Public should take necessary precautions. Use Nose Mask, where possible

(ii) People with Asthma and other respiratory issues should be cautious of the expected weather situations.

(iii) Due to expected dust, special attention should be given to your Skin, Eyes and Lips by keeping them moist as much as possible.

(iv) Airline operators are advised to get updated weather reports and forecast from NiMet for effective planning in their operations